



# GAT MONTHLY MEMBERSHIP PROGRESS REPORT

Results as of: 6/30/2023

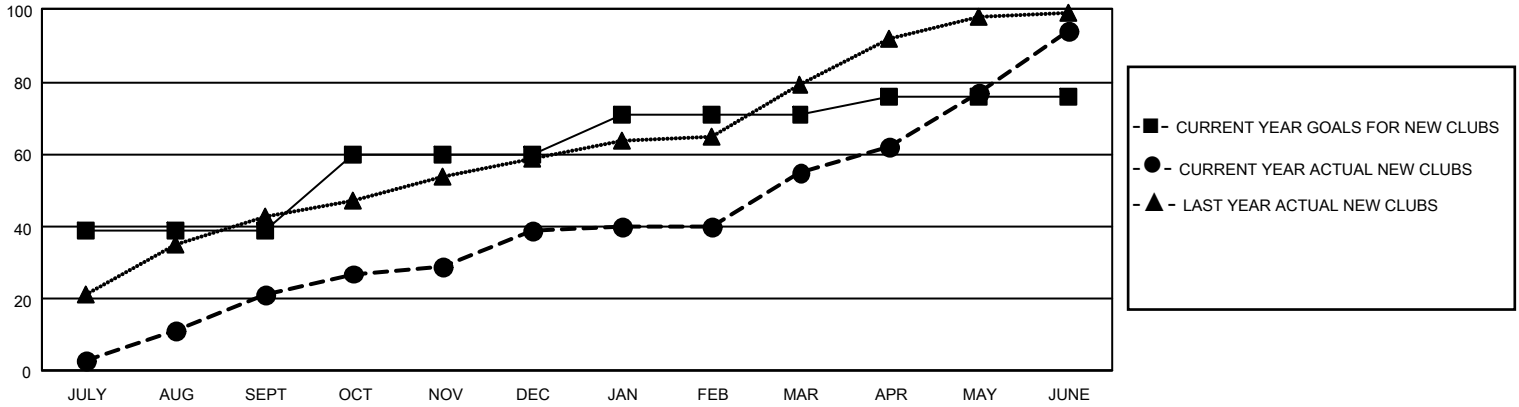
## GMT Constitutional Area 6, Group C

REPORT DOES NOT INCLUDE CLUBS IN UNDISTRICTED AREAS.

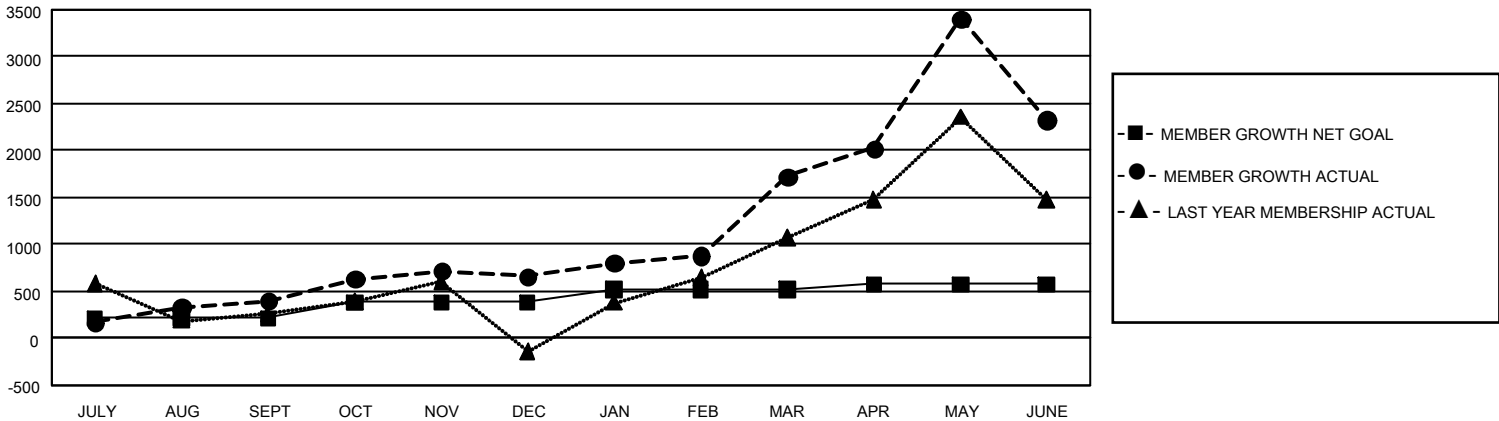
Clubs			
RESULTS FOR 2022-2023			
QUARTER	NEW CLUB GOAL	NEW CLUBS	DROPPED CLUBS
JULY/AUG/SEPT	117	21	1
OCT/NOV/DEC	63	18	12
JAN/FEB/MAR	33	16	1
APR/MAY/JUNE	15	39	3

Members			
RESULTS FOR 2022-2023			
QUARTER	MEMBER GROWTH NET GOAL	MEMBER GROWTH ACTUAL	DROPPED MEMBERS ACTUAL (including transfers)
JULY/AUG/SEPT	209	1,043	555
OCT/NOV/DEC	173	859	561
JAN/FEB/MAR	139	1,503	296
APR/MAY/JUNE	53	2,934	2,040

GOALS AND ACTUAL NEW CLUBS CUMULATIVE



GOALS AND ACTUAL MEMBERS CUMULATIVE



<b>DROPPED CLUBS: 17</b>	565 CLUBS OF 796 ADDED 1 OR MORE NEW MEMBERS	<b>GENDER DISTRIBUTION</b>	
		MALE 17,182 (77.11%) FEMALE 5,096 (22.87%) NON BINARY 0 (0.00%) PREFER NOT TO ANSWER 5 (0.02%)	
<b>DROPPED MEMBERS</b>		<a href="#">CLICK HERE FOR CUMULATIVE MEMBERSHIP DATA</a>	TOTAL FAMILY UNIT MEMBERS 10,657
DECEASED 42 CLUB CANCELLED 311 OTHER 3,098 <b>TOTAL 3,451</b>			FAMILY MEMBERS PAYING HALF DUES 7,474